

GSD-G Steam Series Filter Cartridges



Product Introduction

Filtrafine GSD-G Steam Air Series is made of high-quality 316 sintered stainless steel fiber which is cleanable in a variety of applications. The construction of GSD-G series is all welded and robust.

The GSD-G provides high dirt holding capacity at low differential pressure and high flow rate, and it can be regenerated by back flushing or ultrasonic cleaning to deliver long filter life and reduced operating costs.



CE Certificated.



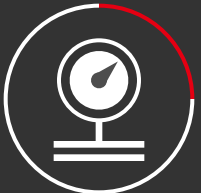
Manufactured under a certificated ISO9001 and ISO14001 quality system.



High-quality 316 Stainless Steel Material.



Maximum temperature 200°C (392°F).
≥150°C(302°F) only for dry compressed air



High flow rates and low pressure drop.

Product Specifications

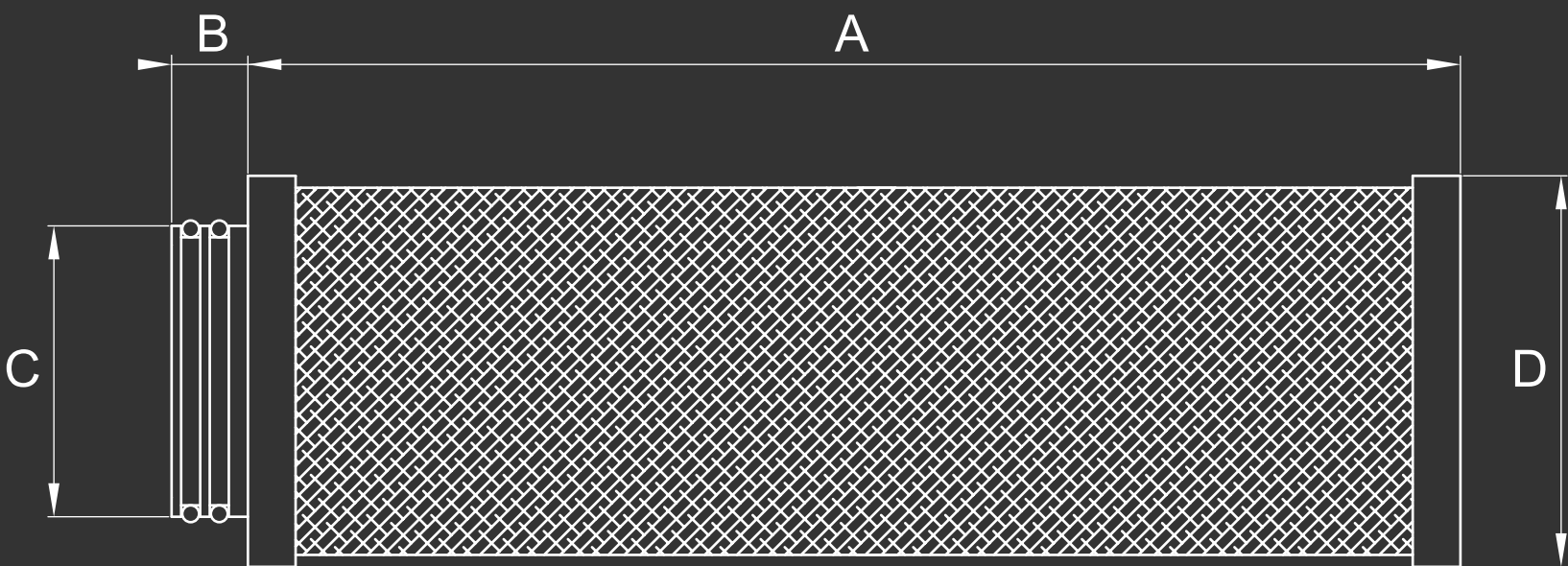
Temperature Range	-4°F to 392°F
Absolute Retention Rate	1, 5, 25 μm
Configurations	UF: Push-in connection and flat end cap P7 connection
Maximum Forward Differential Pressure	145 psid (10bar)
Maximum Reverse Differential Pressure	29 psid (2bar)

Materials

Filter Media	316 sintered stainless steel fiber
Hardware	316 Stainless Steel
End caps	316 Stainless Steel
Support Material	316 Stainless Steel sintered mesh
O-rings	EPDM (standard) , Fluoraz (high temp) , Silicone , Buna N , Teflon Encapsulated Viton

Ordering Information

GSD	5-	05	20	S-	G	15	E
Product Name	Retention Rating	Cartridge Length	Cartridge Outside Diameter	Material of Construction	Applications	Connection Size	O-rings Material
GSD	1, 5, 10, 25μm	03=3", 04=4.1", 05=5", 07=7.1", 10=10", 15=15", 20=20", 30=30"	10=1.65", 20=2.05", 25=2.44", 30=3.39" 50=5.5"	S=316	G=Steam filter	12=1.2", 15=1.5", 24=2.4", 35=3.5"	E=EPDM(standard), H=Fluoraz, S=Silicone, N=Buna N, F=Teflon Encapsulated Viton



Element Size	A	B	C (I.D.)*	C (O.D.)*	D
03/10	3	0.4	0.8	1.2	1.65
04/10	4.1	0.5	0.8	1.2	1.65
04/20	4.1	0.5	1	1.5	2.05
05/20	5	0.6	1	1.5	2.05
05/25	5	0.6	1	1.5	2.44
07/25	7.1	0.5	1	1.5	2.44
05/30	5	0.7	2	2.4	3.39
07/30	7.1	0.6	2	2.4	3.39
10/30	10	0.6	2	2.4	3.39
15/30	15	0.6	2	2.4	3.39
20/30	20	0.6	2	2.4	3.39
30/30	30	0.6	2	2.4	3.39
30/50	30	0.6	3.2	3.5	5.5

* Plug-type connection with double o-ring.